

SATTLER  
OUTDURA

# OVATION 3

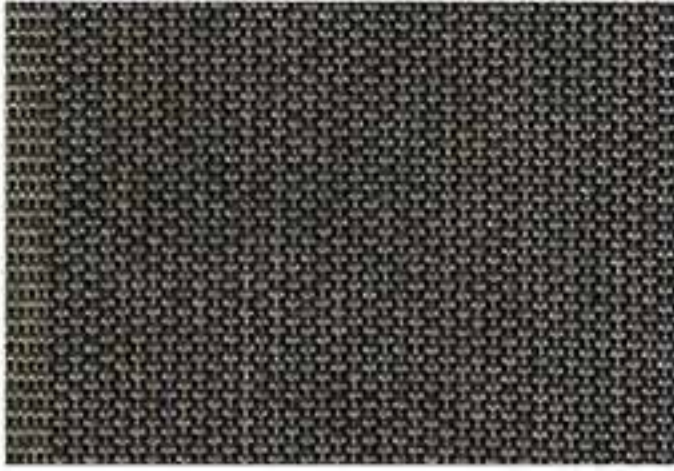
CASUAL FURNITURE DESIGNER FABRIC COLLECTION



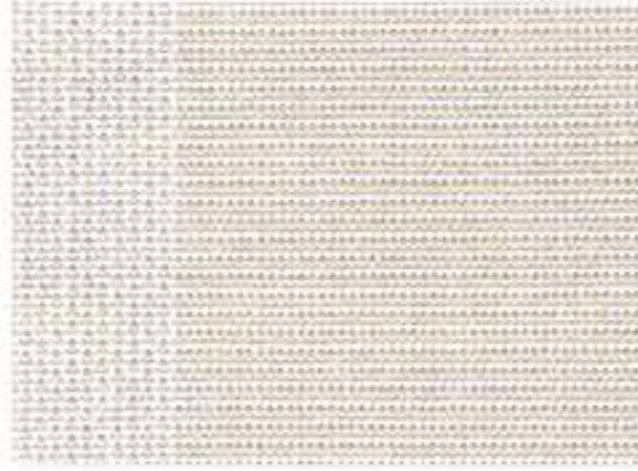
[www.outdura.com](http://www.outdura.com)

outdura®

# EU Collection



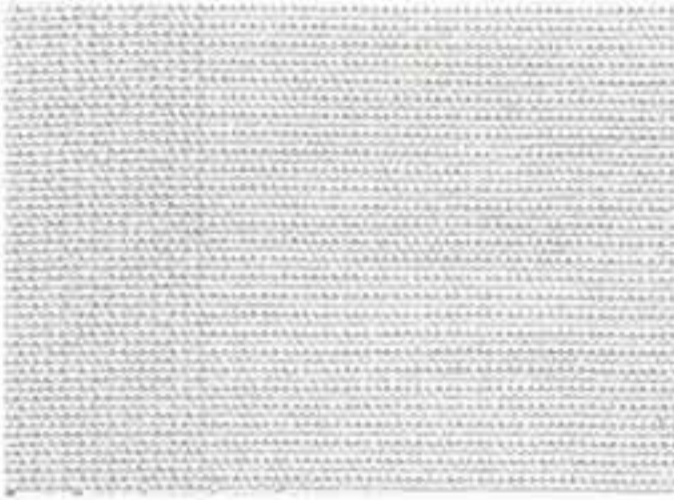
640 NAMIB



662 BEACH



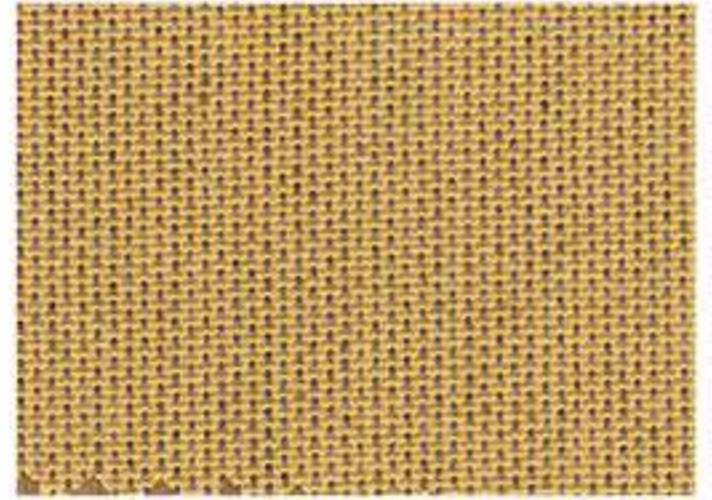
022 RUST



656 CHOTT



347 BURNT RED



570 CORK



546 DUSK BLUE



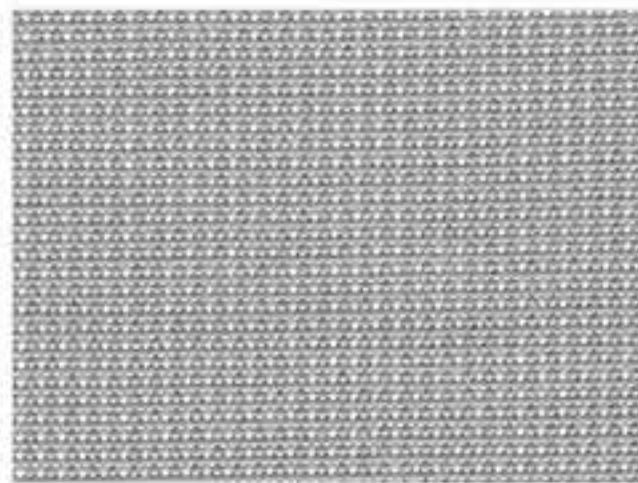
414 MARINE



271 MIDNIGHT BLUE



154 BLACK



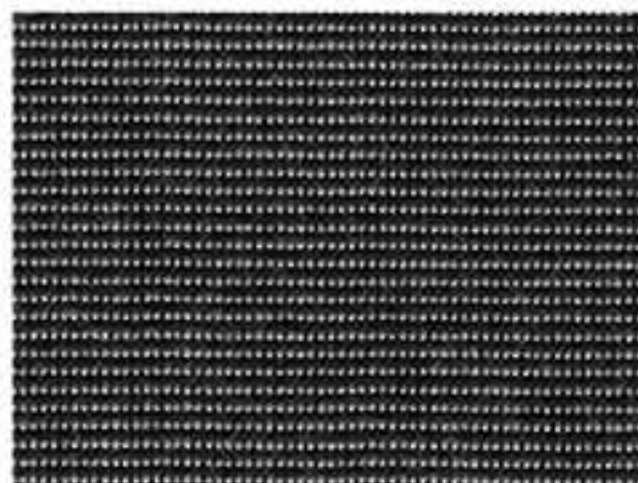
364 BLUE LAGOON



819 TAUPE



638 GRAPHITE



402 CHARCOAL TWEED



403 LINEN TWEED

# JACQUARDS



PALMETTO SAWGRASS

1826



PALMETTO DRIFTWOOD

1825



PALMETTO AZURE

1832



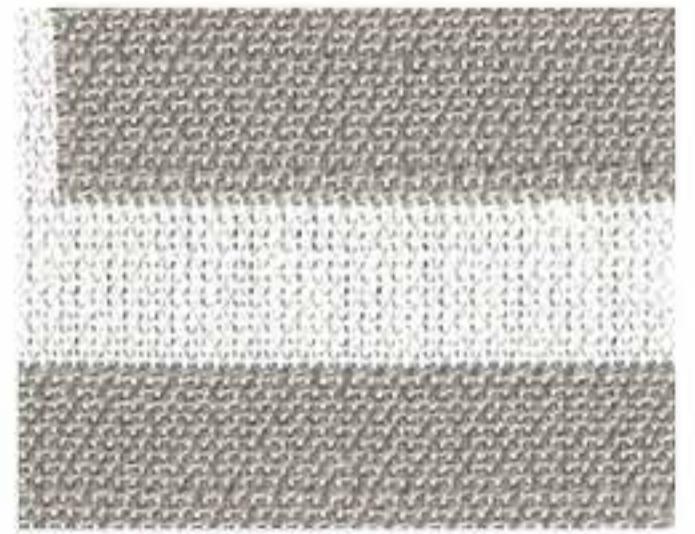
POET LICORICE

0427



ELEMENTS BURLAP

2122



WYNDHAM SILVER

2731



WHITNEY PALM

475W



LAVALIER PALM

6550



BONDI CITRUS

6580



TIMBRE STERLING

8177

# Solid Colors



PESTO

5432



OLIVE

5428



OZ GREEN

5417



AQUAMARINE

5407



AQUATIC

5436



PETROL

5447



ISLAND BLUE

5441



NEPTUNE

5433



ROYAL NAVY

5442



CAPTAIN'S NAVY

5403



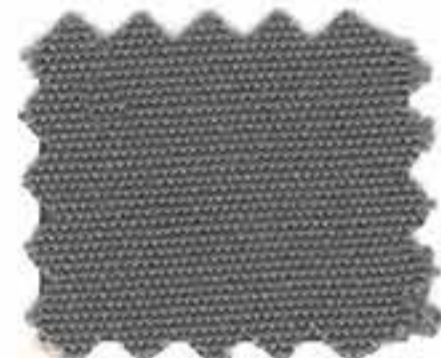
PACIFIC BLUE

5402



CADET GREY

5408



ZINC

5457



KONA

5426



WREN

5456



TAUPE

5412



STONE

5438



STUCCO

5459



ANTIQUÉ BEIGE

5406



SAND

5419



NATURAL WHITE

5409



IVORY

5430



KHAKI

5411



LINEN

5413



SEPIA

5421



CANARY

5424



DANDELION\*

5414



BURNISH

5460



FLAMINGO\*

5461



CHINA RED\*

5410



CRIMSON\*

5451



CARDINAL RED

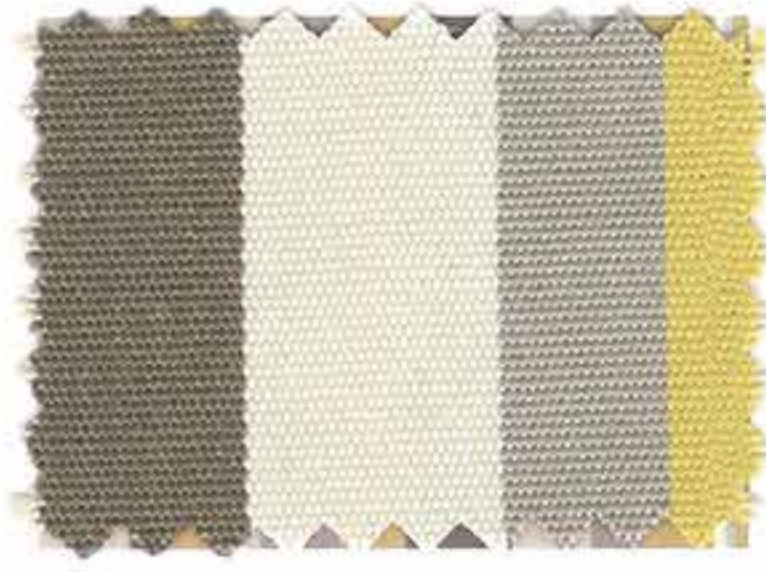
5418

# STRIPES



SPOTLIGHT NECTAR

2451



SPOTLIGHT STERLING

2453



DONOVAN GARDEN

3627



DONOVAN BUTTERSCOTCH

3628



TRADEWINDS MYSTIC BLUE

3812



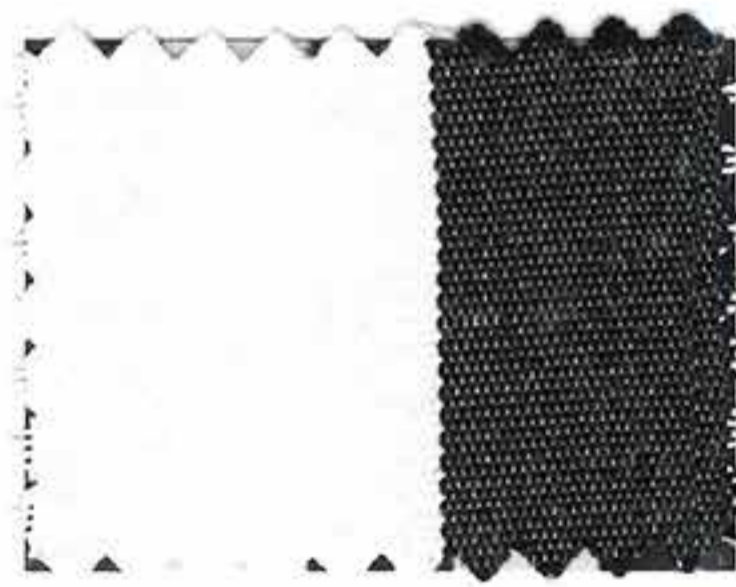
TRADEWINDS GARDEN

3814



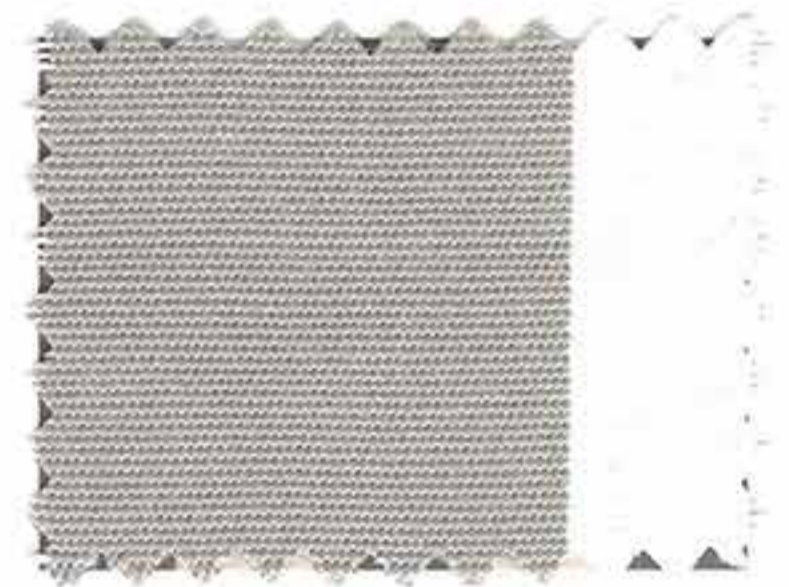
LUNA CAROUSEL

5803



BISTRO CHECKERBOARD

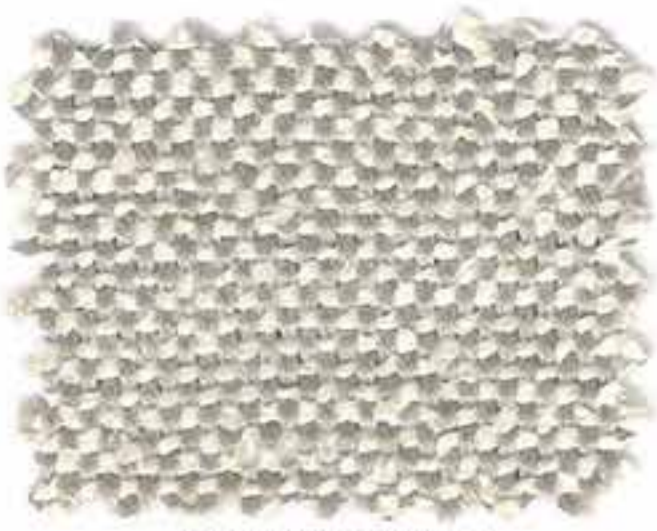
7036



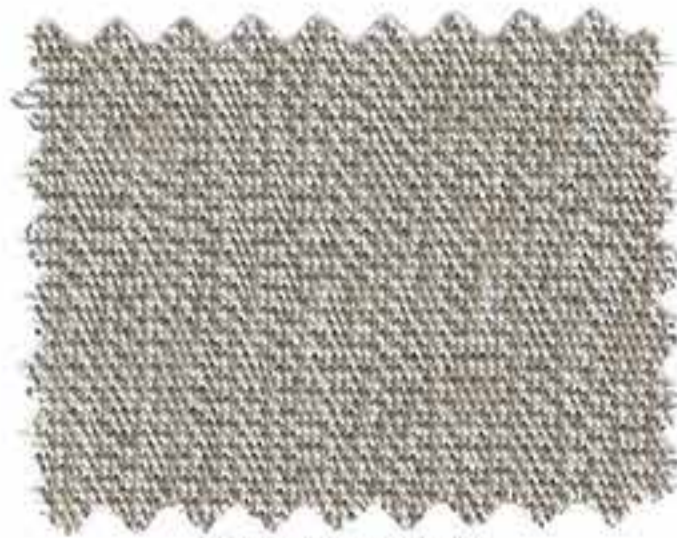
BISTRO PLATINUM

7047

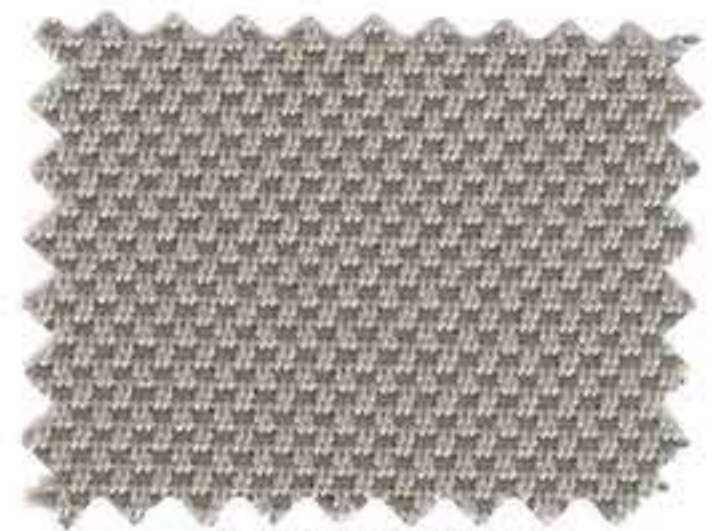
# Textured Fabrics



RUMOR DOVE  
6677



MEMO HEMP  
0522



SCOOP DOVE  
1923



MEMO FLAX  
0521



SIERRA BEACH  
3271



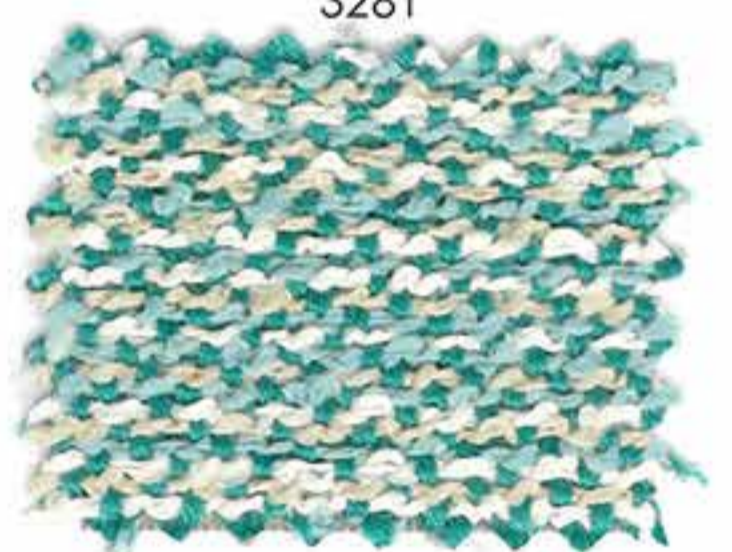
SIERRA MERINGUE  
3281



SIERRA JUTE  
3280



SIERRA TURQUOISE



AVILA CASCADE  
8389



SIERRA TERRA  
3283



SIERRA DELFT  
3274

# OUTDURA: WHAT TO KNOW



## FABRIC SPECIFICATIONS

Base Fabric	100% Solution-dyed acrylic
Standard Roll Length	55 - 65 yards
Finished Weight	8 - 13 oz/sq.yd.
Finished Width	54 inches

### UV FADE RESISTANCE

UV protected Outdura fabrics resist fading and remain colorfast after sun and weather exposure exceeding 1,500 testing hours.

### ABRASION RESISTANCE

Outdura fabrics stand up extremely well to surface wear (or rubbing against another fabric during normal day to day use) with up to 60,000 double rubs on the Wyzenbeek abrasion test scale.

### WATER REPELLENCY

Outdura fabric's water repellent finish makes it water resistant, scoring 90 of 100 on the strict AATCC spray test.

Note: Subject to change depending on technical upgrades. Values indicated without their specific tolerance levels are nominal values with a tolerance of ±5 %. All data presented is given to the best of our current knowledge for guidance purposes and is not legally binding. The technical data in the material data sheet is based on experience from current productions and does not constitute any quality agreement. This data refers to goods in originally manufactured condition without any processing or handling by the customer. The given data is for information only and merely serves as a guide. It will in no way release the customer from checking the suitability of the intended use or of any resulting liability, before processing and/or treatment.

Printing and typographical errors reserved. Possible color deviations between the photographic representation and the materials in nature are technical and printing-related.

## CARE & CLEANING INSTRUCTIONS

### CLEANING INSTRUCTIONS FOR NORMAL STAINS

Remove any loose dirt. Prepare a mixture of cold to lukewarm water, do not exceed 100° F (38° C), and mild soap. Rub in mixture with a soft brush and allow the mixture to thoroughly soak into the fabric. Rinse well with water and air dry. Do not machine dry.

### CLEANING INSTRUCTIONS FOR STUBBORN STAINS

Remove as much surface dirt as possible. Soak fabric for 1 hour in a mixture of 1 gallon (4 liters) cold water, 1/2 cup bleach, and 1/2 cup mild soap. Rub in mixture with a soft brush and rinse thoroughly with cold to lukewarm water and air-dry. Never use water over 100° F (38° C). Do not machine dry. Detergents can be used on Outdura without harm; it may however remove some of the water and stain resistant properties. A simple spraying of a post cure fluorocarbon will restore these properties following the manufacturer's instructions on the package. These sprays can be obtained through a dry cleaning supply store or stores that sell marine related products.

For more detailed cleaning instructions for difficult stains, please refer to the information on [www.outdura.com](http://www.outdura.com).

outdura®



# OUTDURA FABRICS CLEAN & CARE

## CARE AND CLEANING - STAIN REMOVAL

If you have a difficult stain, from paint to lipstick, please refer to the chart below to treat it.

STAINS	SOLUTIONS
Bird droppings, ketchup, cola, egg (raw), grape juice, latex paint(wet), milk, mustard, orange drink, tea, tomato juice	2 oz. liquid detergent, 1 gallon water
Beer, urine, vomit, watercolor	2 oz. liquid detergent 3 oz. white vinegar, 1 gallon water
Berry, blood (dried), chocolate	2 oz. liquid detergent 4-8 oz. ammonia, 1 gallon water
Wine	2 oz. liquid detergent, 4-8 oz. ammonia, 3 oz. white vinegar, 1 gallon water
Butter, car grease, chewing gum, nail polish, oil, shoe polish (liquid)	volatile solvent (acetone) 100%
Crayon, lipstick, paint (latex, dried), paint (oil or lacquer)	paint remover 100%, oil or grease remover (follow mixing instructions)
Coffee	detergent, white vinegar, volatile solvent (acetone), water
Ink (permanent, India, ballpoint)	paint remover 100%, volatile solvent (acetone), 100%, soap, water
Mascara	paint remover 100%, volatile solvent (acetone), 2 oz. detergent, 1 gallon water
Iron rust	oxalic or citrus acids, water
Mildew	1 cup bleach, 2 oz. liquid detergent, 1 gallon water
Shoe polish (wax), wax (candle)	volatile solvent (acetone), 100%, apply heated iron over towel
Suntan lotion	pine oil detergent, water (follow mixing instructions)
Tree sap	turpentine 100%, 2 oz. liquid detergent, 1 gallon water
Charcoal, pencil marks	vacuum, then 2 oz. liquid detergent, 1 gallon water

## CLEANING INSTRUCTIONS FOR NORMAL STAINS

Remove any loose dirt. Prepare a mixture of cold to lukewarm water (do not exceed 100° F) and mild soap. Rub in mixture with a soft brush and allow the mixture to thoroughly soak into the fabric. Rinse well with water and air dry. Do not machine dry.

## CLEANING INSTRUCTIONS FOR STUBBORN STAINS

Remove as much surface dirt as possible. Soak fabric for 1 hour in a mixture of 1 gallon cold water, 1/2 cup bleach, and 1/2 cup mild soap.

Rub in mixture with a soft brush and rinse thoroughly with cold to lukewarm water and air-dry. Never use water over 100 degrees Fahrenheit. Do not machine dry. Detergents can be used on Outdura without harm; however, it may remove some of the water and stain resistant properties. If this is important to you, a simple spraying of a post cure fluorocarbon will restore these properties. Please follow the instructions on the package. These sprays can be obtained through a dry cleaning supply store or stores that sell marine related products.

## Other helpful tips:



Never dry clean Outdura fabrics.



Never use a steamer on Outdura fabrics.



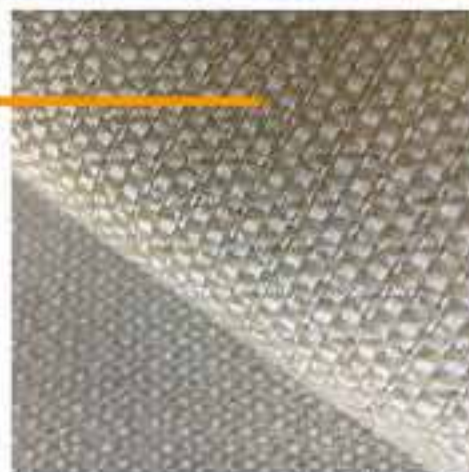
If ironing is necessary, carefully iron on synthetic heat setting, do not use steam.



If machine washing Outdura fabrics, fabric should air dry.



# OUTDURA FABRICS WARRANTY



## WARRANTY FOR OUTDURA® FABRIC

The Outdura® warranty covers the fabric becoming unserviceable as a result of loss of color or strength from normal exposure conditions, including sunlight, mildew, rot and atmospheric chemicals, if the fabric has been properly installed, utilized and maintained. The warranty does not cover labor and installation supplied by the dealer. The warranty also does not apply against deterioration of any kind due to abusive use, accidental burns, negligence, vandalism, perforations or acts of God.

## WARRANTY COVERAGE PERIOD

Five years from date of original purchase.

## GETTING SERVICE

Consumers should call the dealer from whom the product was purchased so the installation can be inspected. The dealer will contact Outdura to secure replacement fabric.

## MAKING A CLAIM

The warranty is valid only if accompanied by a copy of the bill of sale for the item purchased plus a sample of the fabric with the original Outdura® care tag affixed.

## WARRANTY RESPONSIBILITY

Outdura's responsibility is limited to replacement of fabric, free of charge.

## STATE LAW

The Outdura® warranty gives customers specific legal rights and customers may also have other rights, which vary from state to state.



# CARE AND CLEANING INSTRUCTIONS/ WARRANTY INFORMATION

## CLEANING INSTRUCTIONS FOR NORMAL STAINS

Outdura® fabric should be cleaned regularly to prevent excessive dirt from accumulating. Simply brush off any loose dirt and rinse with lukewarm water.

To clean, use a solution of lukewarm water (not exceeding 100° F) and a mild natural soap such as Lux™ or Ivory™. Rinse thoroughly to remove excess soap. For light cleaning, avoid the use of detergents.

Normal wear, usage and cleaning will reduce the effectiveness of Outdura's water-repellent finish. If water repellency is important, a water-repellency treatment (available at marine and awning stores) should be used if the fabric has been cleaned or if the fabric is constantly exposed to the elements.

The stain removal chart is for Outdura marine fabric and is not intended to be a guide for cleaning Outdura Trio.

STAINS	SOLUTIONS
Bird droppings, ketchup, cola, egg (raw), grape juice, latex paint(wet), milk, mustard, orange drink, tea, tomato juice	2 oz. liquid detergent, 1 gallon water
Beer, urine, vomit, watercolor	2 oz. liquid detergent 3 oz. white vinegar, 1 gallon water
Berry, blood (dried), chocolate	2 oz. liquid detergent 4-8 oz. ammonia, 1 gallon water
Wine	2 oz. liquid detergent, 4-8 oz. ammonia 3 oz. white vinegar, 1 gallon water
Butter, car grease, chewing gum, nail polish, oil, shoe polish (liquid)	volatile solvent (acetone) 100%
Crayon, lipstick, paint (latex, dried), paint (oil or lacquer)	paint remover 100%, oil or grease remover (follow mixing instructions)
Coffee	detergent, white vinegar, volatile solvent (acetone), water
Ink (permanent, India, ballpoint)	paint remover 100%, volatile solvent (acetone), 100%, soap, water
Mascara	paint remover 100%, volatile solvent (acetone), 2 oz. detergent, 1 gallon water
Iron rust	oxalic or citrus acids, water
Mildew	1 cup bleach, 2 oz. liquid detergent, 1 gallon water
Shoe polish (wax), wax (candle)	volatile solvent,(acetone), 100%, apply heated iron over towel
Suntan lotion	pine oil detergent, water (follow mixing instructions)
Tree sap	turpentine 100%, 2 oz. liquid detergent, 1 gallon water
Charcoal, pencil marks	vacuum, then 2 oz. liquid detergent, 1 gallon water

## FOR TRIO CLEANING PLEASE USE THESE GUIDELINES

Please keep the fabric clean by simply brushing off any loose dirt and rinse with lukewarm water. Please follow the general cleaning recommendations on the left, for most dirt and stains. For heavier stains and soiling, a mixture of 2 oz of detergent and a gallon of water can be used. Brush the stain or dirt briskly using a soft bristle brush and rinse the area thoroughly of all residual detergent. Under no circumstances should acetone, paint remover, turpentine, alcohol or any solvent be used in cleaning Trio.

## WARRANTY FOR OUTDURA FABRIC

Outdura warrants its 8-ounce fabric for five years from the date of the original purchase and warrants its 9 ounce Outdura fabric for six years from date of original purchase. The Outdura warranty covers the fabric becoming unserviceable as a result of loss of color or strength from normal exposure conditions, including sunlight, mildew, rot and atmospheric chemicals, if the fabric has been properly installed, used

and maintained. The warranty does not cover labor and installation supplied by the dealer. The warranty also does not apply against deterioration of any kind due to abusive misuse, accidental burns, negligence, vandalism, perforations, or acts of God.

## WARRANTY COVERAGE PERIOD

Six years from date of original purchase.



## GETTING SERVICE

If you are a consumer in need of making a claim or in need of service, you should call the dealer from whom the product was purchased so the installation can be inspected. The dealer will contact Outdura to secure replacement fabric. The warranty is valid only if accompanied by a copy of the bill of sale for the item purchased plus a sample of the fabric with the original Outdura® care tag affixed.

## MAKING A CLAIM

The warranty is valid only if accompanied by a copy of the bill of sale for the item purchased plus a sample of the fabric with the original Outdura® care tag affixed.

## WARRANTY RESPONSIBILITY

Outdura's warranty responsibility is limited to replacement of fabric, free of charge. The Outdura warranty gives customers specific legal rights and customers may also have other rights, which vary from state to state.



www.outdura.com

outdura® is a trademark of Sattler AG